

# WELCOME GUIDE

FOR INTERNATIONAL STUDENT

IS  
BA

Co-funded by the  
Erasmus+ Programme  
of the European Union



# TABLE OF CONTENTS



<b>1 BIENVENUE À BESANÇON!</b>	<b>5</b>
<b>2 BEFORE YOUR ARRIVAL</b>	<b>9</b>
<b>3 AFTER YOUR ARRIVAL</b>	<b>17</b>
<b>4 BIENVENUE A L'ISBA!</b>	<b>25</b>
<b>5 LIVE, MEET, DISCOVER AND ENJOY!</b>	<b>31</b>



# WELCOME TO BESANÇON!

Thank you for choosing ISBA Besançon for your international mobility! This practical guide will help you prepare your arrival and facilitate your first days in Besançon.



Vue du Pont Battant

## FIRST TIME IN BESANÇON ?

Located in the Franche-Comté region, in eastern France near the Swiss border, Besançon is a city that perfectly combines heritage, creativity, and nature. In 2025, it counts around 121,867 residents, called « Bisontins » and « Bisontines ».

Since 1986, Besançon has proudly carried the label « City of Art and History » thanks to its remarkable architecture and rich cultural heritage. The Vauban fortifications, designed by the renowned military engineer, have been listed as a UNESCO World Heritage Site since 2008 (picture below).



Citadelle

Besançon has 14 districts. The heart of Besançon is shaped by the Doubs River, which loops around the city like a natural fortress, that's why locals call the center « La Boucle » (the Loop).

## WEATHER AND SEASONS

Besançon enjoys a mixed oceanic and continental climate, meaning you can expect a bit of everything: Frequent rainfall throughout the year Cold winters with frost and snow Warm, dry summers perfect for outdoor activities. You'll need warm clothes and sturdy shoes between October and April. Even though winter can be harsh, it also brings its charm — from Christmas markets to winter sports nearby. (see section V for more details)



Vue du ciel

# FOOD SPECIALITIES

## SPÉCIALITÉS CULINAIRES

If you're a food lover, you'll fall for Besançon's local specialties. As in the rest of France, good food here is more than just a pleasure, it's a true way of life. From rich cheeses to comforting dishes, here's a short list of what you simply must try during your stay.

### CHEESE LOVER'S

Mont d'Or and Cancoillotte: Two of the region's icons. Often eaten hot with potatoes and a Morteau sausage or simply spread on fresh bread or cold cuts.



Mont d'Or



Cancoillotte



Saucisse de Morteau

### OTHER DISHES

**Croûte aux champignons** : Think of it as a rustic pâté en croûte but filled with mushrooms instead of meat. Warm, creamy, and full of forest flavour, it's one of the best vegetarian dishes you can find in the region.



**Galette comtoise** : It looks like a galette des rois, but a humbler version. In the galette comtoise, almond powder is swapped for flour. Soft, sweet, and delicately flavored with orange blossom, it's a comforting treat from Franche-Comté that feels both festive and homey.



### LOCAL BEVERAGES

**Pontarlier (or « Pont »)** : an anise-flavoured spirit from the nearby mountains. Add fir syrup and you'll get a Sapon, a surprisingly fresh mix.

**Crémant du Jura** : a sparkling wine for celebrations — elegant, light, and full of character.

**Macvin du Jura** : a sweet, amber wine-based liqueur with notes of dried fruit.

**Burgundy / Jura wines** : From the elegant reds of Burgundy to the distinctive, slightly oxidative Vin Jaune from Jura, these regional wines reveal deep, complex flavours that tell the story of their terroir.

**Crème de cassis** : a blackcurrant liqueur from Dijon mix it with white wine for a Kir, simple and magical. And for those who prefer something lighter, try La Mortuacienne, the region's beloved artisanal lemonade.



## CHECK LIST: IMPORTANT DOCUMENTS

Before your arrival, make sure your Erasmus+ or other scholarship is fully finalized.

### Erasmus for non-EU students (not resident in the EU) :

- ❖ A valid passport
- ❖ A student VISA
- ❖ A health record or vaccination certificate
- ❖ A private health insurance certificate
- ❖ A civil liability insurance certificate

### Erasmus for EU students :

- ❖ A valid passport or identity card
- ❖ A European card of health insurance / CEAM
- ❖ A civil liability insurance certificate

## HOUSING

As an international student at ISBA, you are guaranteed access to a renovated room in a CROUS university residence thanks to an agreement between ISBA and the CROUS. The assigned residence is **Résidence Colette**. Before your arrival, ISBA will contact you to confirm whether you wish to benefit from this housing option, and you should also get in touch with the CROUS to secure your accommodation.

### Crous Contacts :

General contact: 03 81 48 47 47

Résidence Colette: 03 81 48 47 50

Email: [pole-hebergement-besancon@crous-besancon.fr](mailto:pole-hebergement-besancon@crous-besancon.fr) / Visit their [website](#)

### RESIDENCE COLETTE

15 min walk from ISBA  
20 min from the city by bus  
9m<sup>2</sup> room - 270 euros / month



Crous du campus de la Bouloie

Washing machines and dryers are usually available in the student residences of the CROUS.

If you do not have a washing machine in your accommodation, you can use a self-service laundromat. Depends on your location, the price of the wash can be more or less expensive. It is usually cheaper in the campus than in the city center.

## PRIVATE HOUSING

If you choose to live in private accommodation, you can explore listings on several platforms:

- ❖ The CROUS website dedicated to private rentals: [lokaviz.fr](http://lokaviz.fr)
- ❖ The CRIJ website: [jeunes-bfc.fr](http://jeunes-bfc.fr)
- ❖ Other private listing websites: [leboncoin.fr](http://leboncoin.fr), [topannonce.fr](http://topannonce.fr)

You can also rent a private flat through a real-estate agency or directly from a landlord. Keep in mind that agencies often charge significant fees (agency fees and move-in inspection fees).

Several websites list ads posted directly by private landlords, such as Le Bon Coin, SeLogger.com, or Facebook Marketplace. To avoid scams, unpleasant surprises, or unnecessary travel, the MyVeasytor app allows you to book an on-site student to visit the property for you. For around €30, you receive a detailed report with photos and videos of the flat and its surroundings.

### HOSTELS

The [Les Oiseaux](#) and [La Cassotte hostels](#) offer rooms and small studio flats (« studettes »).

### CATHOLIC HOSTELS

Catholic hostels also rent out affordable rooms close to the city center. Options include Espace Grammont, L'Escale, La Maîtrise, and Sainte-Anne, among others. These places can offer good study conditions, but be aware that some may have specific rules or expectations—always check the conditions before committing.

### FLAT-SHARING

More interested in a shared flat ? Check listings on Le Bon Coin, on La Carte des Colocs, or look for roommate ads in the Facebook group « Étudiants de Besançon ».

### DOCUMENTS TO PROVIDE

Whatever your situation, as a tenant you must :

- ❖ Fill out a standard lease and complete the inventory of fixtures when you receive the keys.
- ❖ Pay a security deposit (equivalent to one month's rent) upon arrival. It will be returned to you when you leave if no damage is found.
- ❖ Provide an home insurance. (more informations on the next page)

You will also likely be asked to provide:

- ❖ A copy of your ID and your guarantor's ID
- ❖ Your residence permit or long-stay visa (titre de séjour)
- ❖ A copy of your current proof of address (justificatif de domicile). Commonly accepted documents include: Gas, electricity, or phone bill (landline or mobile) / Home insurance certificate / Rent receipt / French tax notice (avis d'imposition) or a certificate of non-taxation (attestation de non-imposition)

*All supporting documents must be less than 6 months old (and less than 3 months old for utility bills).*

You must have assurance habitation (house insurance coverage) to cover expenses in the event of damage, whether you are renting a modest studio or staying in a Crous home.

There are several insurance providers, but these two stand out: Friday and ADH, a French student housing insurer.

Simple and quick!

## HOUSING ASSISTANCE (CAF)

As a tenant, you may benefit from government grants such as : ALS (social housing allowance) / APL (individual housing)

### YOU MUST VERIFY TWO THINGS FOR THE APL

Your lodging needs to be covered by a state contract. Ask your landlord if you rent separately, but this is frequently the case. The Social Housing Allowance (ALS) a meanstested housing benefit, is available to you if your accommodations are not covered by a state agreement (conventionné).

The majority of students have access to APL. You can calculate your rights by [clicking here](#). The grant amount is calculated according to your ressources: [Online Application](#).

**ADDRESS :**  
CAF du Doubs = social security, family allowances  
2 Rue Denis Papin, 25000 Besançon  
[www.caf.fr](http://www.caf.fr)  
**CONTACT BY PHONE :**  
3230 or 0969255252  
(special lines for students)

## SETTING UP A GAZ AND ELECTRICITY CONTRACT

### WHEN YOU MOVE INTO A FLAT, TWO SITUATIONS ARE POSSIBLE

**1. Everything is included in the rent**  
Water, electricity and gas are already covered, so you don't have any administrative steps to take. Just be careful: if you use more than the allowance included in your rent, the landlord can ask you to pay the extra!

**2. Utilities are not included**  
You'll need to set up two or three separate contracts: one for water, and one for electricity and/or gas. If this is your case, just follow the guide below!

### BEFORE MOVING IN

**Gas :**  
Subscribe one to two weeks before arriving, as a technician needs to come and open the meter.

**Electricity :**  
Activation is usually immediate, but it's still best to plan ahead.

### SUBSCRIPTIONS

The easiest way is to call an energy provider (EDF, Engie, or another company). You will need to provide: the address of the flat, the meter number, the desired start date.

The provider will then calculate an estimated monthly payment based on the size of the flat, the appliances, and the number of occupants.

We recommend choosing a higher estimate to avoid an unpleasant surprise with a large adjustment bill. Also remember to ask for fixed rates for the entire duration of your stay to avoid any price increases.

### PAYMENT

Monthly direct debit based on the estimate. / A meter reading (or a smart meter) will adjust the amount every 6 to 12 months

## COMMUNICATIONS

### MOBILE PHONE

In France, the main mobile operators are Orange, SFR, Free, Bouygues Télécom, La Poste Mobile, etc. You can choose either :

✧ A subscription, usually costing between €2 and €60 per month depending on your usage and contract terms.

✧ A prepaid card, which does not require a long-term commitment (you'll need your own mobile phone).

**Tip:** Choose a plan that fits your needs during your stay and check the conditions of the contract carefully.

### GLOBAL PREPAID CARDS

These cards let you call abroad at attractive rates. You can use them from a street phone or a landline. They are available in tobacco shops and newsstands.

### INTERNATIONAL CALLS

You can also dial abroad using 00 + country code + number. Be aware that some mobile plans charge extra fees for international calls. To save money, we recommend using WhatsApp or similar apps.



### INTERNET AND WI-FI

There are many places with free Wi-Fi in Besançon: most University buildings public areas like the train station, the CRIJ, malls, and some fast-food restaurants.

### HOME INTERNET SUBSCRIPTION

To get internet at home, you must sign up with an operator (the same as for mobile).

Your accommodation must be connected to the phone network or optical fiber.

A subscription generally costs €10 to €30 per month.



# OPEN A BANK ACCOUNT

## MANAGING A CURRENT ACCOUNT

With a French bank account, you will have access to several payment methods, such as a credit/debit card and sometimes a chequebook. If either is lost or stolen, contact your bank immediately with your contract details so they can cancel and replace them.

## WHY STUDENTS NEED A BANK ACCOUNT?

Students must have a bank account in their own name in order to:

- ✦ receive housing assistance receive reimbursements from social security or private insurance
- ✦ pay their rent
- ✦ pay utility bills (electricity, water, etc.)
- ✦ make everyday purchases

Note: For EU students, a French bank account is not legally required, but it is often necessary in practice (especially for housing assistance or certain contracts).

## HOW TO OPEN A BANK ACCOUNT?

Make an appointment with the bank of your choice and bring the following documents:

- ✦ your ID or passport
- ✦ your visa or residency permit (for non-EU citizens)
- ✦ proof of address (rent receipt, electricity bill, etc.)

A French bank account isn't required *obligatorily* for EU students, but it usually simplifies administrative procedures (like APL).



## FURNISHING

Emmaüs: [Emmaüs](#) is a French charity that supports people in need by collecting and reselling various second-hand items. It's a great place to buy affordable things when you arrive and when you leave France, you can also donate what you no longer need instead of throwing it away.

La ressourcerie: [The ressourcerie](#) is a place for sharing and helping each other for students at the University of Franche-Comté. It works with the CROUS. It is located across from the Lumière university restaurant on the Bouloie campus. It has many different items that anyone can take for free, based on what they need.

## EUROPEAN HEALTH INSURANCE CARD

If you're an EU-citizen, you can benefit from the European Health Insurance Card (CEAM in French). It will grant you rights to health insurance and medical care according to the laws and procedures in force in our country. Do not forget to submit your request to your Health Insurance Fund at least 15 days before your departure. Please note: this card is individual and personal. Each family member should have their own, including children under 16 years.

With this card, you won't need to include any health insurance document in your application.

## LIVING COSTS - WHAT TO EXPECT

The first month:	
✦ Accommodation Housing	€250-600 + €320+ deposit
✦ Insurance	€60 for the year
✦ Work projects supplies	€150
<b>TOTAL</b>	<b>€780 - 1130+</b>

The first month:	
✦ Accommodation (university residence)	€250-600
✦ Housing taxes	€30-60
✦ Food	€250
✦ Transports	€20-30
✦ Work projects supplies	€20
✦ Phone	€2-60
✦ Internet	€10-30



Ressourcerie du campus



**3**

**AFTER YOUR ARRIVAL**

# GETTING AROUND !

## GETTING YOUR STUDENT BUS/TRAM CARD

If you are staying in Besançon for one semester or longer, it is highly recommended to subscribe to the student bus/tram monthly pass.

You can download the Ginko app for iOS and Android and find all the fares here. The entire network is free every Saturday.

### PRICING :

Reloadable card: €4

Monthly student pass: €16.80

Total: €20.80

Everything can be done online at [ginko/boutique](http://ginko/boutique).

You will need to provide:

- ✳ Your ID card
- ✳ An identity photo
- ✳ Your school certificate
- ✳ Your bank details (RIB) if you pay by direct debit

You can choose to have the card delivered within 7 days, or pick it up the next day at the GINKO office.

## TAXI

From Monday to Wednesday, there is no public transport after midnight. On Thursdays and Fridays, bus and trams run until 1:30 a.m.

During weekends, service is limited: buses run roughly every 40 minutes, and the urban lines (7 to 12) do not operate on Sundays.

If you live far from the city center and cannot walk home, you can call a taxi (0033 3 81 88 80 80) or use the Uber app.

Be aware that taxi fares in France are quite high:

A night ride from the city center to the campus usually costs a little over €15.

## CYCLING AND VÉLOCITÉ

The Vélocité service offers self-service bicycles available 24/7 throughout the city and in the city center. The annual subscription costs €16.

More information is available at: [www.velocite.besancon.fr](http://www.velocite.besancon.fr)

Cycling is one of the cheapest and often fastest ways to get around Besançon.



Good to know :

The student association Vélocampus runs a bike-repair workshop directly on campus.

Using Vélocité :

You can buy tickets at stations that accept bank cards or directly through the app.

✳ Day ticket: first 30 minutes free, then €1 per hour (maximum €4 per day).

✳ Annual subscription: €24 (free if you already have a Ginko subscription).

While riding, you can collect points and even unlock a second bike for a friend at no extra cost.

✳ Visit the website of [infojeunes](http://infojeunes) with complete informations



**GINKO** – Local bus services  
Place de la Révolution  
29 Rue des Boucheries  
Weekdays: 9 am – 6 pm  
Saturdays: 9 am – 5 pm  
Phone: +33 8 25 00 22 44  
Website: [ginkobus.com](http://ginkobus.com)

## WALKING :

Besançon is a human-scale city. It takes around 20 minutes to cross the historical city-center « la Boucle ». Going to the city center from the campus will take around 40 minutes.

## BUS/TRAM LINES YOU'LL GET FAMILIAR WITH :

✳ Tram lines T1/T2 pass by the train station, the city center and the hospital.

✳ Bus line 3 is the main bus line, it passes by the train station, intermarché (supermarket), the city-center and Campus.

✳ Bus lines 7 and 9 have a stop right in front of ISBA, named « Beaux-Arts »= Fine Arts.

✳ Bus line 4 goes to the shopping area « Chateaufarine ».



Besançon

## TRAIN :

In France, you can travel almost anywhere by train. To book your journeys, use the SNCF Connect website or app.

**Good tip:** If you are under 25, fares for trips to or from Franche-Comté are reduced by 50%. You'll find similar discounts in other regions as well.

**Good to know:** For most TER tickets, you can board any other train running the same route on the same day, unless otherwise stated. Make sure to check the information printed on your ticket.

**Besançon has two stations:** Besançon Viotte, located in the city centre, and Besançon Franche-Comté TGV in Les Auxons for long-distance travel. A shuttle train runs between the two stations.

Voici une version qui commence comme demandé :

*If you travel frequently by TGV, the SNCF « Carte Avantage Jeune SNCF » is worth considering, as it offers substantial discounts on long-distance journeys for travelers aged 12 to 27.*

## CARPOLING

You can also consider carpooling if you want to share travel costs. Sometimes it's even more convenient. For this, you can use the Blablacar website or app.



## BUS

Buses also connect major cities. For example, you can use the Mobigo network to travel within the region; most routes cost around €2. For long-distance trips, you can use the well-known FlixBus, which is both affordable and environmentally friendly.



## TAKE CARE OF YOUR HEALTH !

As we mentioned earlier, it's important that you have your European Health Insurance Card, as you'll need it for any consultation reimbursements.

### SSE – STUDENT HEALTH SERVICE

On campus, you can visit the SSE (Student Health Service), which provides free urgent care, vaccination updates, dietetic consultations, contraception advice, screening for sexually transmitted infections, disability support, and psychological counselling.

Please note that the service is closed during university holidays.

[www.sumpps-sante.univ-fcomte.fr](http://www.sumpps-sante.univ-fcomte.fr)  
Tel : +33 3 81 66 61 30

You can also do a sexual screening here :

CeGIDD Doubs-Jura  
Tel : +33 3 81 65 44 50  
15 Av. Denfert Rochereau, 25000 Besançon

### CONTRACEPTION AND ABORTION

In France, contraception, testing, and IVG (legal voluntary termination of pregnancy) are easily accessible and free of charge. You can find many informations on this website :

- ❖ <https://www.service-public.fr/particuliers/vosdroits/F218>
- ❖ <https://www.service-public.fr/particuliers/vosdroits/N435>

### AMELI

If you want to access all your payments and especially your reimbursements, you should create an Ameli account. It's a very useful website, but to log in for the first time, you need to have already obtained the required information: your Social Security number, bank details (RIB), and the serial number of your Carte Vitale (the digits at the bottom).

### HAVING A DESIGNATED GENERAL PRACTITIONER

One last important detail: to receive 70% reimbursement, you must declare a médecin traitant (your designated general practitioner). The process is simple: visit a general practitioner and, while your file is being created and ask the doctor to tick the « médecin traitant » box.



#### + GOOD TO KNOW :

As a student, you can have a complete health check-up, free of charge at the local branch of the Caisse Primaire d'Assurance Maladie (CPAM). It is an opportunity to review your health status with a medical team.

Address : 2 rue Denis Papin, 25000, Besançon  
Tél : 3646  
Site : [www.ameli.fr](http://www.ameli.fr)

### CICS (CENTRE D'INFORMATION, DE CONSEIL ET DE SANTÉ) :

Information on contraception, gynecological check-ups, abortion (voluntary termination of pregnancy), sexually transmitted infections, and psychological support. Everything is free, but you need to make an appointment.



[www.cics-centredeplanification.fr](http://www.cics-centredeplanification.fr)  
Téléphone : +33 3 81 83 34 73  
Adresse : 24 rue de la République, 25000 Besançon

The university has a preventative medicine department composed of practitioners, nurses, a nutritionist, a psychologist and social worker. They offer free vaccination updates, individual medical and social information, and consultations on dietetics, contraception, prevention of STIs and disability. A psychologist can be consulted by appointment and in complete discretion. They also organise prevention initiatives on a range of subjects (tobacco, alcohol, AIDS, etc.) and provides first-aid training. You can make an appointment on: [www.doctolib.fr](http://www.doctolib.fr)



Service De Santé Etudiante (SSE)  
45C avenue de l'Observatoire (on Campus)  
Tel : +33 3 81 48 46 37

ISBA also offers a free therapy session service to its students. You can ask the school office for more information.

You can also take an appointment with a psychologist, she is there 2 times a month in ISBA. Her name is Isabelle Paris, you can call her at this number : 06 89 20 86 35.

Please note that she doesn't speak english, only appointments in French are available.



# WHERE TO EAT ?

## UNIVERSITY RESTAURANT

CROUS university restaurants are often called “Resto U” or “RU”. They are the best way to get daily, complete and balanced meals at a low price for students. Each RU offers several options so that every student can meet their dietary needs (including vegetarian options).

The cost of a standard meal at the RU is €3.30 (2023). Scholarship holders and some students in precarious situations can benefit from a €1 meal, according to national CROUS rules.

Cafeterias and RU are generally open from Monday to Friday, in the morning, at lunchtime and in the evening (depending on the restaurant).

## MAIN RESTAURANT

NAME	ADDRESS	AREA / CAMPUS
RU Lumière	42 avenue de l’Observatoire	Bouloie campus
RU Petit Bouloie	45 avenue de l’Observatoire	Bouloie campus
RU Canot	Quai Veil Picard	City centre
Cafeteria Arsenal	2 place Saint-Jacques	City centre
RU Mégevand	36 rue Mégevand	City centre
Café International	73 Quai Veil Picard	City centre
RU Hauts du Chazal	Rue Ambroise Paré Near	UFR SMP (Medicine & Pharmacy)

## PAYING WITH IZLY – CAMPUS PAYMENT SERVICE



As an ISBA student, you can activate an IZLY account to pay for your meals at the RU and in other CROUS catering outlets. After you have met ISBA’s Education team, you will receive an email with a link to activate your IZLY account.

Tip : download the IZLY mobile app for an easier user experience.

To top up your account, click on “recharger” (reload) on the homepage and choose the amount you want to transfer to your IZLY account.

To pay with IZLY, open the app, click on “payer” (pay) : a QR code is generated, which you show to the cashier at the RU to scan.

A 4-minute walk from ISBA, you’ll also find Boulangerie Pâtisserie Maison Deschamps, perfect for a delicious gourmande break.





# ISBA'S INTERNATIONAL RELATIONS DEPARTMENT

## — HERE TO HELP YOU

For any question regarding your international mobility, you can come see us at the International Relations office.

## HOW TO FIND US



From the main entrance, enter the school and turn left. The access door to the admin offices is right there.



Cross the entire hallway, and you should end up in front of the Education/International Relations shared office.

The International Relations Office is dedicated to supporting students. We handle all matters related to mobility : scholarships, housing, language assistance, courses, and more. At the same time, we understand that moving to a new country can be challenging. Feeling lost, disoriented, or surprised by your new surroundings is completely normal, and even if you're adapting well, it's okay to feel homesick or isolated sometimes.

### CONTACT :

Tel: +33 3 81 87 81 33

E-mail: [international@isba.besancon.fr](mailto:international@isba.besancon.fr)

If you ever need guidance or someone to talk to about your experience, our team is here for you !

If you don't speak French very well, you can visit the [CLA's website](#) which offers french courses.

# THE STUDIES

## GENERAL ORGANIZATION OF STUDIES

- ❖ The program is structured into three cycles, in accordance with the European framework, with the attribution of ECTS (European Credit Transfer and Accumulation System) credits.
- ❖ The first cycle lasts three years, with 180 credits, leading to the National Diploma of Art (DNA), which corresponds to a bachelor's degree.
- ❖ The second cycle lasts two years, with 120 credits, leading to the Higher National Diploma of Plastic Expression (DNSEP), which corresponds to a master's degree.

## MORE INFORMATION ABOUT YEAR 4 (FIRST YEAR OF CYCLE 2)

This year focuses on research-creation, developing a personal project, and diploma preparation :

- ❖ **Research modules** : seminars, workshops, tutorials, internships, study trips, technical workshops, conferences.
- ❖ **Individual work** : thesis writing, artistic development, and participation in research/creation plateaus.
- ❖ **Assessment** : thesis defense, presentation of the plastic or graphic project, before a specific jury.

## TOOLS, MODULES, AND PLATEAUS

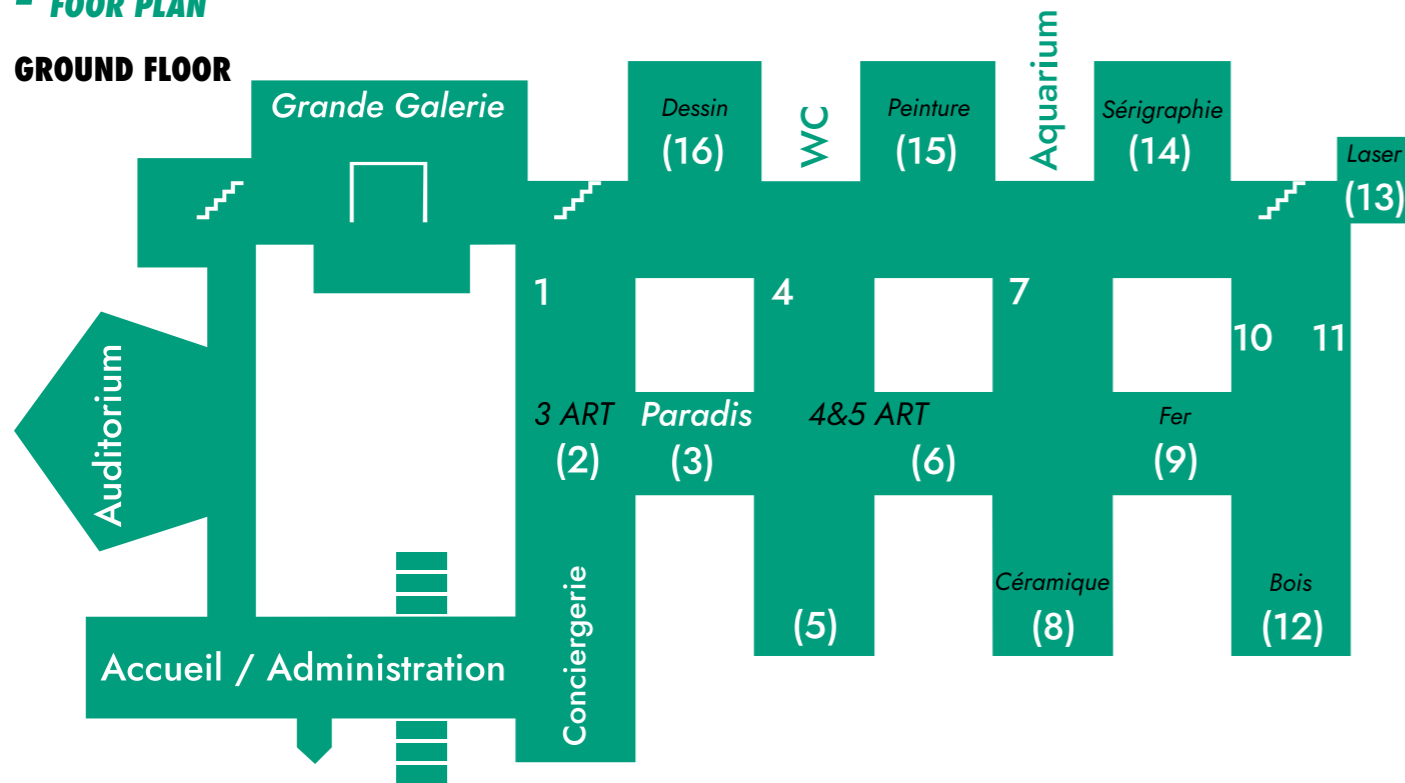
- ❖ **Tools** : fundamental techniques (drawing, layout, editing, etc.).
- ❖ **Modules** : thematic or technical courses, compulsory or optional, often interdisciplinary.
- ❖ **Plateaus** : a transversal and collaborative learning space where students and teachers explore contemporary issues together. It is a multidisciplinary approach combining writing, oral presentations, theory, and practice, enabling the hybridization of approaches and formats. Over 6 to 8 sessions, plateaus foster experimentation, collective reflection, and project development, serving as a continuation of the school's research. They can unfold in several phases with evaluation moments to measure progress.
- ❖ **Annexes** : supplementary activities such as seminars, workshops, conferences, internships, mobility programs, student participation, etc.



# THE INSTITUTION

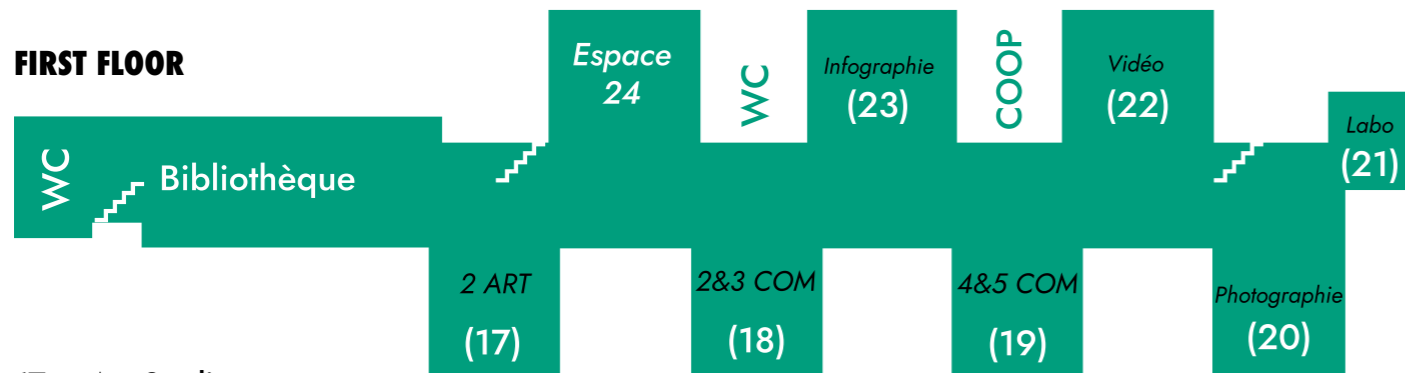
## - FLOOR PLAN

### GROUND FLOOR



- 1 – Classroom / Screening Room
- 2 – Art Option Studio
- 3 – Exhibition Space “Paradis”
- 4 – Classroom
- 5 – Art Option Studio
- 6 – Art Option Studio
- 7 – Classroom
- 8 – Sculpture / Ceramics Workshop
- 9 – Metal Workshop
- 10 – Technical Office
- 11 – Technical Staff Room
- 12 – Wood Workshop
- 13 – Laser Cutting Room, Paint Booth
- 14 – Screen Printing /Engraving Workshop
- 15 – Painting Room
- 16 – Drawing Room

### FIRST FLOOR



- 17 – Art Studio
- 18 – Visual Communication Studio
- 19 – Visual Communication Studio
- 20 – Photography Workshop
- 21 – Photo Lab
- 22 – Video Room / Student Union Room
- 23 – Graphic Design Workshop
- 24 – Exhibition Space “Espace 24”

### BASEMENT



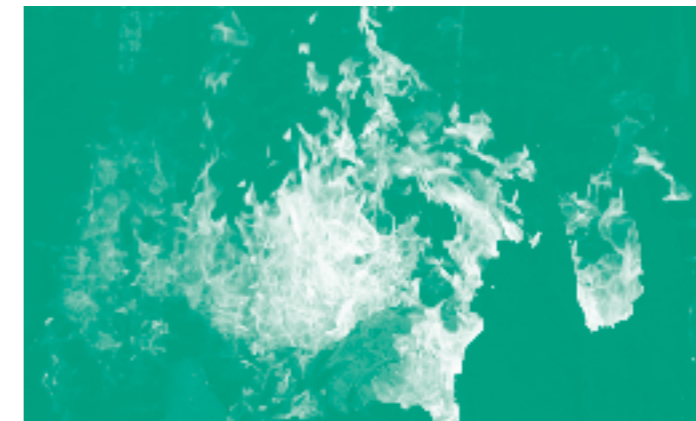
### WORKSHOP

The various workshops are available to students: drawing, painting, engraving, screen printing, typography, sculpture, photography, video, sound, graphic design, wood, and metal. Each workshop is supervised by a qualified teacher, assistant, or technician who supports students in carrying out their projects within the framework of their courses, the different projects offered by the school, or in the preparation and development of their diplomas.



### EXHIBITION SPACES

Several spaces within the school allow each student to showcase their work during specific exhibition periods, for diploma presentations, or as part of exhibition projects led by the teachers, including the Grand Gallery, Espace 24, Le Paradis, Le Castelet, and the four basement spaces.



### LIBRARY

The ISBA Library is a welcoming 250 m<sup>2</sup> resource and learning center offering 16,000 titles, contemporary collections, digital tools, and Wi-Fi, supporting students, faculty, and the public in their projects, research, and artistic practice across all disciplines. Opening hours are posted on the door.

Don't hesitate to visit the [ISBA website](#) for more information.



## LIVE

### PRACTICE YOUR RELIGION

Main places of worship in Besançon :

- ❖ Catholic worship: “La source” youth meetings at the student chaplaincy, 9 rue de la Convention
- ❖ Catholic Orthodox Church of France, 1 rue Grand-Charmont
- ❖ Protestant worship: Reformed church of France, 5 rue Goudimel
- ❖ Jewish Faith: Synagogue, 23C quai de Strasbourg
- ❖ Muslim worship: Mosque, 7 rue Elisée Reclus

Context in France : France is a **secular state**, which means our republic separates the state from religion. Therefore, there is no state religion and it is neutral towards religious and spiritual beliefs. The republic ensures that the principle of secularism is followed by higher education institutions, which means you won't find any room dedicated to religious practices in a public school in France for instance.

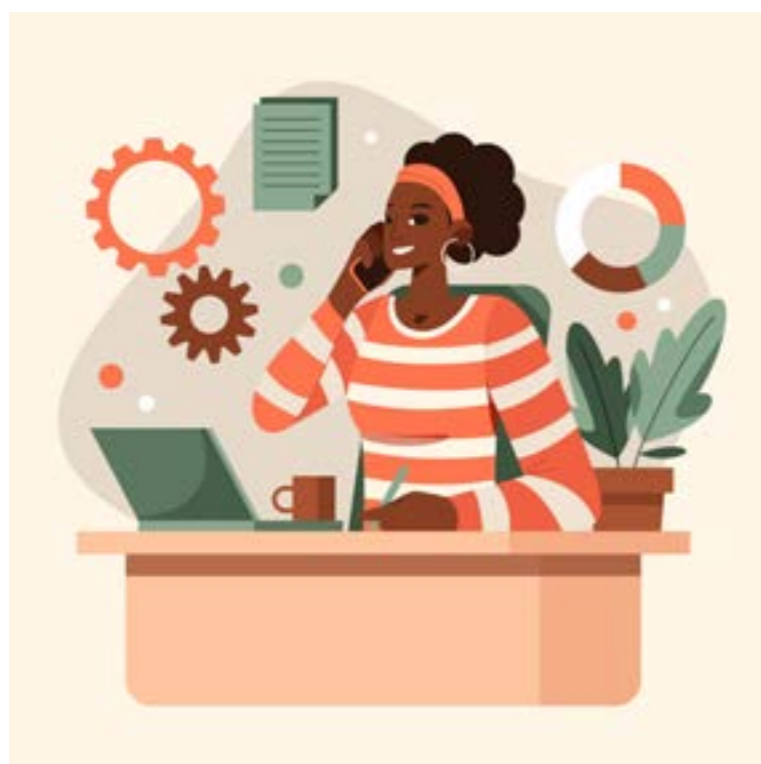
### FIND A STUDENT JOB

You can look at job ads :

- ❖ on the CROUS website: [www.jobaviz.fr](http://www.jobaviz.fr)
- ❖ on the University website: [ose.univ-fcomte.fr](http://ose.univ-fcomte.fr)
- ❖ on [www.jeunes-bfc.fr/jobs](http://www.jeunes-bfc.fr/jobs)
- ❖ on Pôle Emploi: [www.pole-emploi.fr](http://www.pole-emploi.fr)
- ❖ on regular services like Indeed, HelloWork, etc.
- ❖ on Facebook groups such as Erasmus groups, general student groups, and the “Job 25 – Emploi Doubs” group

Don't hesitate to look around in the city center — there might be on-site job ads !

It can also be useful to check physical notice boards, especially at ISBA.



## MEET

### THE ESN ASSOCIATION

ESN (Erasmus Student Network) is a student organization present throughout Europe. Its mission is to welcome international students, promote student mobility, and encourage student engagement in associations.

### ESN IN BESANÇON

In Besançon, ESN organizes many events for international students. Among these are events open to everyone, such as the Night of International Students (NEM).

### THE NEM - INTERNATIONAL STUDENT NIGHT

The NEM is an official welcome night for all international students. It is an opportunity to meet local students, participate in workshops, enjoy the free photobooth, eat, and celebrate together.

### THE BUDDY SYSTEM

ESN also helps you find a buddy partner. The Buddy System pairs international students with local students to encourage intercultural exchange. It can be a great way to meet new people, improve your language skills, receive support, and share your own culture.

Association's website or social media :

<http://besancon.esnfrance.org>

@esn\_besançon on instagram & facebook

### BIENVENUE AUX ÉTUDIANTS

Each year, the city of Besançon organizes, in September/October, a welcoming event for new residents called “Bienvenue aux Étudiants”.

It is an opportunity for you to meet and talk directly with various regional partners (GINKO, libraries, social security services, associations, etc.).

### WELCOME CONCERT

There is also a free welcome concert offered in the evening.

More info at: [www.bienvenueauxetudiants.org](http://www.bienvenueauxetudiants.org)



## DISCOVER

### WANT SOME CULTURE ?

Besançon is a culturally rich city. As we saw at the beginning, it is known for its Vauban fortifications, an iconic monument of the city and the region.

### THE CITADEL OF BESANÇON

She dominates the city from its impressive ramparts that follow the natural terrain. Within the Vauban fortifications lies the Citadel, a true cultural site listed as a **UNESCO World Heritage site**, which houses several museums labeled «Musées de France» as well as a zoological garden. It hosts a rich and diverse cultural program throughout the year: temporary and permanent exhibitions, concerts, activities, and guided tours in various spaces adapted to different audiences. More information is available on the website :

<https://www.citadelle.com/>



©citadelle.com

### CINEMA AND THEATER

- ❖ La RODIA (concert hall) : [larodia.com](http://larodia.com)
- ❖ Les 2 Scènes (shows, movies) : [les2scenes.fr](http://les2scenes.fr)

A multi-purpose cultural venue offering live performances and cinema screenings, including films at the Kursaal.

- ❖ CDN (theatre) : [cdn-besancon.fr](http://cdn-besancon.fr)

Besançon's national dramatic center, dedicated to contemporary theater performances at Théâtre de la Bouloie.

- ❖ MEGARAMA Beaux-Arts (cinema) : [beaux-arts.megarama.fr](http://beaux-arts.megarama.fr)

A mainstream cinema located downtown, showing a wide range of films.

- ❖ Victor Hugo (cinema) : [cinemavictorhugo.fr](http://cinemavictorhugo.fr)

An arthouse cinema in the city center showcasing independent and art films.

- ❖ Théâtre de la Bouloie : [culture.crous-bfc.fr](http://culture.crous-bfc.fr)

A cultural venue located on the university campus, offering an eclectic program with theater, music, and dance, especially focused on young regional companies and student audiences.

In summer, enjoy outdoor cinema screenings across Besançon, like inside of the Citadelle.



### MUSEUM AND EXHIBITIONS PLACES

Besançon offers a rich variety of museums and art galleries, perfect for exploring its cultural heritage. Notable among them is the **Museum of Fine Arts and Archaeology**, which houses impressive collections of paintings, sculptures, and archaeological finds, and the **Museum of Time**, located in the stunning Palais Granvelle. The city also features the **Victor Hugo Birthplace**, a dedicated museum celebrating the famous writer's life. For contemporary art lovers, the **Frac Franche-Comté** are must-visit places.

Additionally, the **Galerie de l'Ancienne Poste**, situated on the Grande Rue, presents rotating exhibitions of contemporary art, photography, and ceramics. Most of these venues offer free or reduced entry for students. This list is by no means exhaustive, so it's worth checking online for the latest exhibitions and opening times. Furthermore, here are some useful sources where you can find information about things to do in Besançon.

### USEFUL RESSOURCES

The city's website : [www.besancon.fr](http://www.besancon.fr)

What to do in Besançon : [sortir.besancon.fr](http://sortir.besancon.fr) (lists many events)

Event calendar : [www.besancon-tourisme.com](http://www.besancon-tourisme.com)

Sports events in Besançon : [www.grandes-heures-nature.fr](http://www.grandes-heures-nature.fr)

Running events in Besançon : [lesdefisdela Boucle.com](http://lesdefisdela Boucle.com)

Instagram account for youth activities : @jeunes\_a\_besac



**SORTIR À BESANÇON**

### FESTIVALS

Besançon hosts a diverse range of festivals that enrich its cultural life. These include the "Hôp Hop Hop" festival, known for its vibrant music and artistic events; "Livres dans la Boucle" a celebrated book festival; "Drolement Bien" which offers comedic and entertaining performances; "Mardis des Rives" lively Tuesday events by the riverside; "Bien Urbain" a popular urban arts festival; and "Du Bitume et des Plumes" blending street culture and literature. Beyond the city, nearby villages also offer unique festivals, such as "Le Loup dans la Rue" in Deluz, which showcases street arts and live performances, reinforcing the dynamic cultural scene in the region.

Festival de soupe Bol bol bol



## TOURISM

If you are planning to travel around France or Europe, there are several convenient and affordable options to consider. Flixbus and BlaBlaCar both offer extensive networks of bus and carpool services, making it easy to reach many destinations at a low cost. Trains remain a popular choice for comfort and speed, and for those looking for flexibility and adventure, the Interrail pass is an excellent option. Interrail allows unlimited train travel across most European countries for a set number of days within a larger timeframe, giving travelers the freedom to explore numerous cities and regions without buying separate tickets.

Near Besançon, there are several attractive cities worth visiting. Paris, Lyon, and Strasbourg offer rich cultural experiences, historic sites, and vibrant urban life. Closer to Besançon is Dijon, a charming city known for its history, gastronomy, and beautiful architecture, making it a perfect day trip or weekend getaway.



[myfavouriteescapes.com](https://myfavouriteescapes.com)

Regarding outdoor tourism, the Franche-Comté region stands out for its lush natural landscapes. It is known for its extensive hiking trails, serene lakes like those in the Jura mountains, and quality ski resorts that attract visitors during winter. Whether you enjoy hiking, water sports, or winter activities, this region offers a wide range of options to experience nature and outdoor leisure.



[Station de Métabief](#)



[Lacs du Jura](#)

Don't hesitate to do your own research online, check Instagram, or ask locals for tips and hidden gems. If you're interested, you can also browse and purchase the «Carte Avantage Jeune» a discount card for young people aged 12 to 27 that offers around 30% off train fares across France and Europe, plus other travel benefits. It is a great way to save money if you plan to travel frequently.

**FINALLY, IF THERE'S ONE LAST THING  
WE WANT TO SAY, IT'S: ENJOY!  
YOU MIGHT GO ABROAD AGAIN,  
BUT PROBABLY NEVER IN A SETTING QUITE  
LIKE ERASMUS.  
MAKE IT YOUR OWN, EXPLORE, MEET PEOPLE,  
TRY NEW THINGS, OR SIMPLY TAKE  
IT AT YOUR OWN SPACE.  
CREATE MEMORIES THAT WILL STAY WITH YOU LONG  
AFTER YOUR TIME ABROAD !**